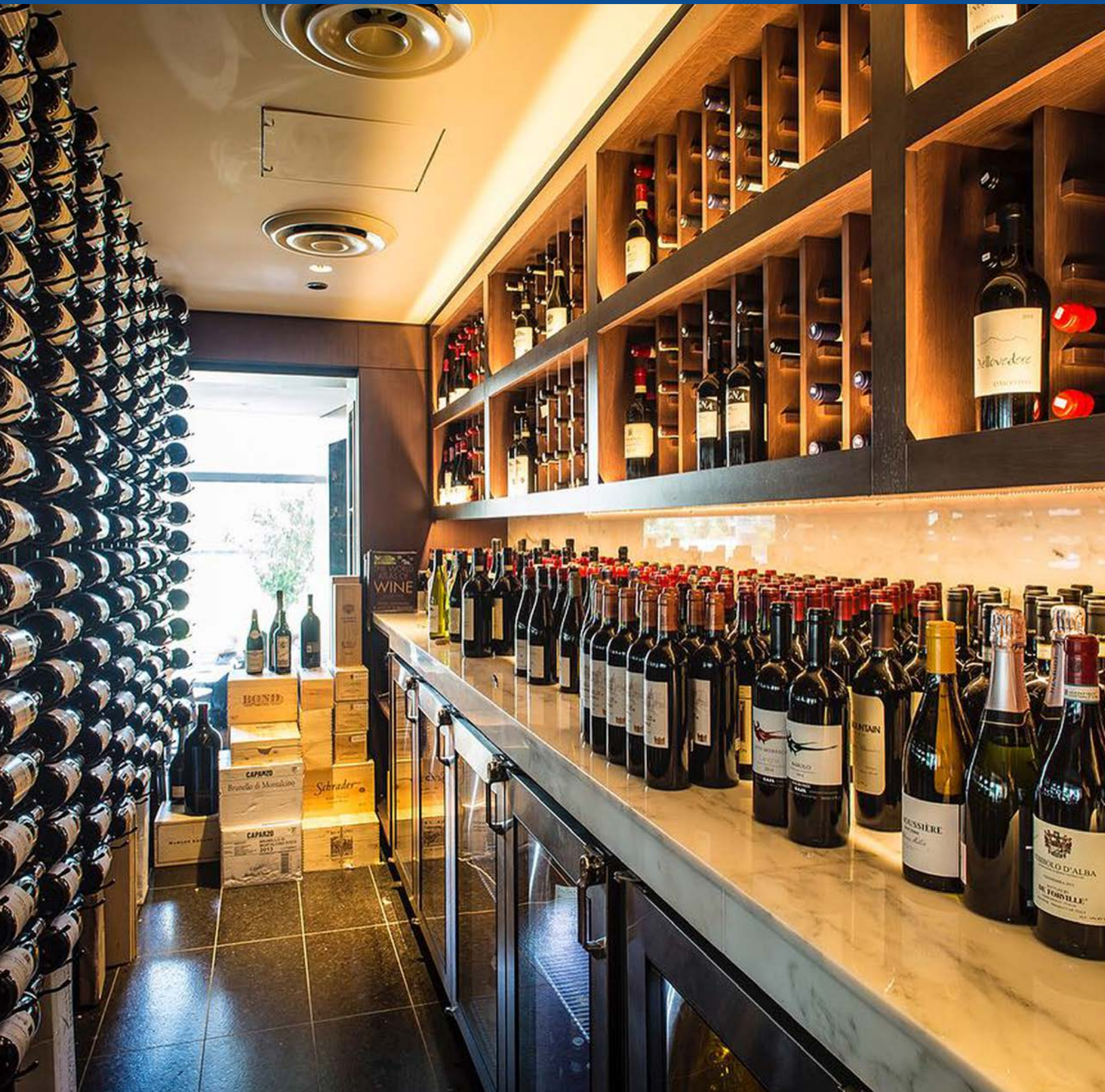


Glastender®

BAR REFRIGERATION



Reach-In Coolers | Two Platforms

End-Wall Refrigeration



C1FB60

Our end-wall refrigeration design locates the evaporator above the compressor compartment to free up interior space for maximum storage capacity.



End-wall refrigeration models are fully serviceable from the front, making them ideal for built-in applications.

Available in 32" or 36" one-door models, 52" or 60" two-door models, 72" or 84" three-door models, and 92" or 108" four-door models.

(Doors removed for illustration)

Space-Maximizing Refrigeration



C1SB48

Our space-maximizing refrigeration design minimizes the width of the compressor compartment to provide increased capacity and functionality not normally found in a compact footprint.



Space-maximizing models are serviced from the side, so they are not intended for built-in applications.

Available in 20", 24", or 28" one-door models and 36", 44", or 48" two-door models.

(Doors removed for illustration)

Features + Flexible Options



Two Height Profiles

Available in 35" bar-profile height or 29" low-profile height, not including the optional finished top, legs or casters.

Built-In Appearance

Available without a finished top for integrated installation below customer-supplied top.



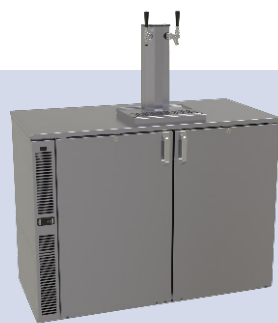
Easy-Access Interior

Doors open 110° and bar-profile door openings are sized to provide unobstructed access to a full-height keg, two rows of 750ml wine bottles, three rows of long-neck beer bottles, or four rows of 6" pint glasses.

Draft Beverage Compatible

All bar profile coolers are draft compatible. We offer pre-configured models to simplify the process.

Scan to view more on Beverage Dispensing solutions.



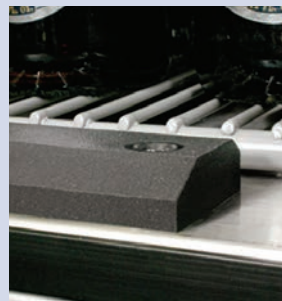
Beer Dispensing (-DD)



Wine Dispensing (-WD)



Coffee Dispensing (-CD)



Bar-profile models feature impact-absorbing scuff plate on all door openings to protect the lower threshold when loading kegs.

Handles + Locks

Our durable handles are available in three options: signature, pull-tab, and tube.

Select pull-tab or tube handles for drawers.

Locks are featured on all doors and drawers.



Attractive Exterior Finishes

Solid or glass doors are available in several finishes: black vinyl-clad, grainline stainless, and laminated. Three styles of jeweled stainless and unlaminated are not pictured.

Pull-Out Wine Shelves

Door sections can be configured with horizontal, vertical, or a combination of full extension pull-out wine shelves (model specific).



Drawers

Any door section on standard depth, bar-profile models or space-maximizing, low-profile models can be converted to two drawers.



Other Reach-In Models



C1SL24-UC

Undercounter Coolers

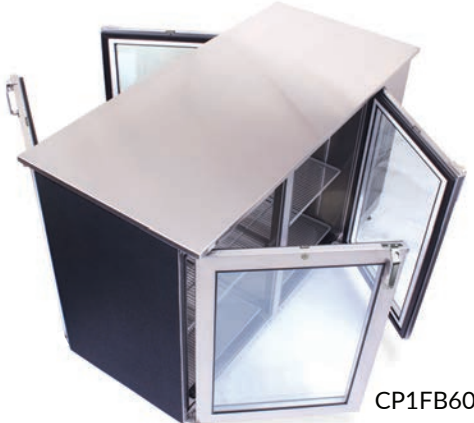
Low-profile coolers are available in an undercounter configuration, which includes a 24-1/8" deep stainless steel finished top, pull-tab handles, 110° hinge, and a choice of casters or legs.

Reach-In Frosters

Reach-in frosters operate at a lower temperature range, making them ideal for frosting glassware or holding specialty ice. Available with one or two doors and in bar- or low-profile heights. Drawers are available on most models.



F1SB24



CP1FB60

Pass-Thru Coolers

Pass-thru coolers have hinged doors on the front and back, making them ideal for island bar and food service applications. Only available with end-wall refrigeration. Available with one, two, or three sections and in bar- or low-profile heights.

Other Reach-In Models (continued)



CS1FB52

Shallow-Depth Coolers

Shallow-depth coolers are end-wall refrigerated and bar-profile height with a front-to-back depth of 16-7/8" to conserve floor space. Available with two or three doors.

Wide-Mullion Keg Cooler

While most Glastender reach-in coolers are draft compatible, this wide-mullion, direct draw cooler is specifically designed to hold three 1/2 barrel kegs within a 72" length. A variety of beverage tower options are available for keg coolers.



KC72



CS1RB40

Remote Coolers

Remote coolers are insulated cabinets with an evaporator housing that must be connected to a remote condensing unit. Reach-in, pass-thru, and shallow-depth models are available with heights and number of doors varying by model.



High Profile Coolers

Elevating back bars to new heights



C1TH24F

Elevated Merchandising, Incredible Capacity

Featuring nearly the same capacity as a 60" bar-profile cooler in 24" linear floorspace, high-profile cooler models elevate packaged, ready-to-drink products up from behind the bar directly into the customer's line of sight.

By enhancing visibility, store management can strategically place popular labels or limited time offers, and help customers find their favorite brands more easily.



Wire racks

Wine shelves

Black vinyl-clad with wire racks

Full-height door with wine shelves

One-Zone Models

Available with a single full-height door, or two half-height doors. Epoxy coated adjustable wire shelves are standard shelving options.

For holding wine, full-height door models can be configured with 13 pull-out wine shelves.

Foodservice Applications

Listed to NSF Standard 7 for open food storage, one-zone high-profile models are great additions to tight BOH spaces, takeout, and to-go stations.

Blends seamlessly with our bar profile refrigeration models



Wire racks

Wire racks and wine shelves

Wine shelves

Two-Zone Models

Featuring two half-height doors with an insulated wall separating independently temperature-controlled sections.

Designed primarily for wine storage, the bottom zone has selectable temperature ranges from 50-65F. The top zone offers more flexibility to store beer, wine, or other beverages with selectable temperature ranges between 34-65F.

Pull-out wine shelves can be configured instead of wire shelves in one or both zones.

Slide-Top Coolers + Frosters



ST48-S

MF36-S2

Maximum Efficiency

Slide-top coolers provide incredible storage capacity with a minimal footprint.

Top-Accessible Froster Storage

Frosters operate at a lower temperature range, making them ideal for frosting glassware.

Easy Cleaning

All stainless steel interior with radius corners for thorough cleaning. Drain automatically routes moisture during the defrost cycle to condensate drain pan so that a drain connection is not required.

Durability

Incredibly strong, one-piece top with integral mullion will not bend or sag. The stout door sliding ledge is supported by the wall of the cabinet so the ledge will not break or collapse.

Options

Slide-top coolers and frosters are available in a 24" depth and in a stainless or black vinyl-clad exterior. Slide-top coolers are available in lengths 24" to 96", and our frosters are available in 24", 36" or 48" lengths.

Servicing Access

Condensing unit is designed to pull-out for easy servicing.

Racks + Shelves

Slide-top coolers include adjustable divider racks to prevent tipping. Bottom racks are standard on frosters, available with two additional layers of split shelving for full access to glassware.



Flush Sides

Smooth, flush sides so that gaps are not created between the cooler and adjacent underbar equipment.

Integrated Lock

Built-in door locks are included on slide-top coolers so hasps are not required.



Defrost Cycles

Frosters include two convenient defrost cycles: automatic and manual.

Cocktail Prep Cooler



CPC24
Patent Pending

Perfectly Chilled

Refrigerated, self contained cocktail prep cooler with extraordinary capacity for mix ingredients and garnishes.

Highlights

Drink rail surface with removable perforated insert, insulated night cover, and removable cutting board. Adjustable stainless steel bullet feet.

Capacities

- (8) 480mL elixir bottles
- (12) 1/9 pans, included with lids
- (21) 750mL bottles

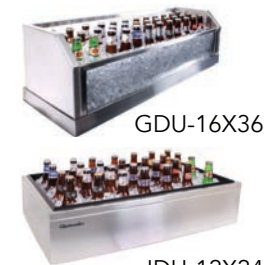
Accessories + Related Products



LLD2-42

Lighted Liquor Displays

Countertop, tiered displays for merchandising liquor bottles. Available with two or three tiers.



GDU-16X36

IDU-12X24

Ice Displays

Countertop displays provide ice-chilled bottle merchandising. Available in all stainless steel or with glass front & back panels.



BGS-24

Back Bar Glass Storage

Open-front, bar-profile glass storage cabinets, available in 18", 24", and 30" lengths.



BLD-24

Back Bar Liquor Displays

Open-front, bar-profile, four-tier liquor display. Available in 6" incremental lengths from 18"- 48".



FRA-24

Ice Cream Freezers

Underbar ice cream freezer with dipper well. Available in 24" or 36" lengths to hold one or two 3-gallon tubs, respectively.



FRM-2-C

Craft Ice Holding Freezer

Large-format ice storage within an underbar lineup. Preserves the shape and clarity of craft ice for up to two weeks.



MS20-SS(L)

Machine Stands

Reduced-height, reach-in dry storage cabinets for back bar applications. Available with one or two doors.



DS24

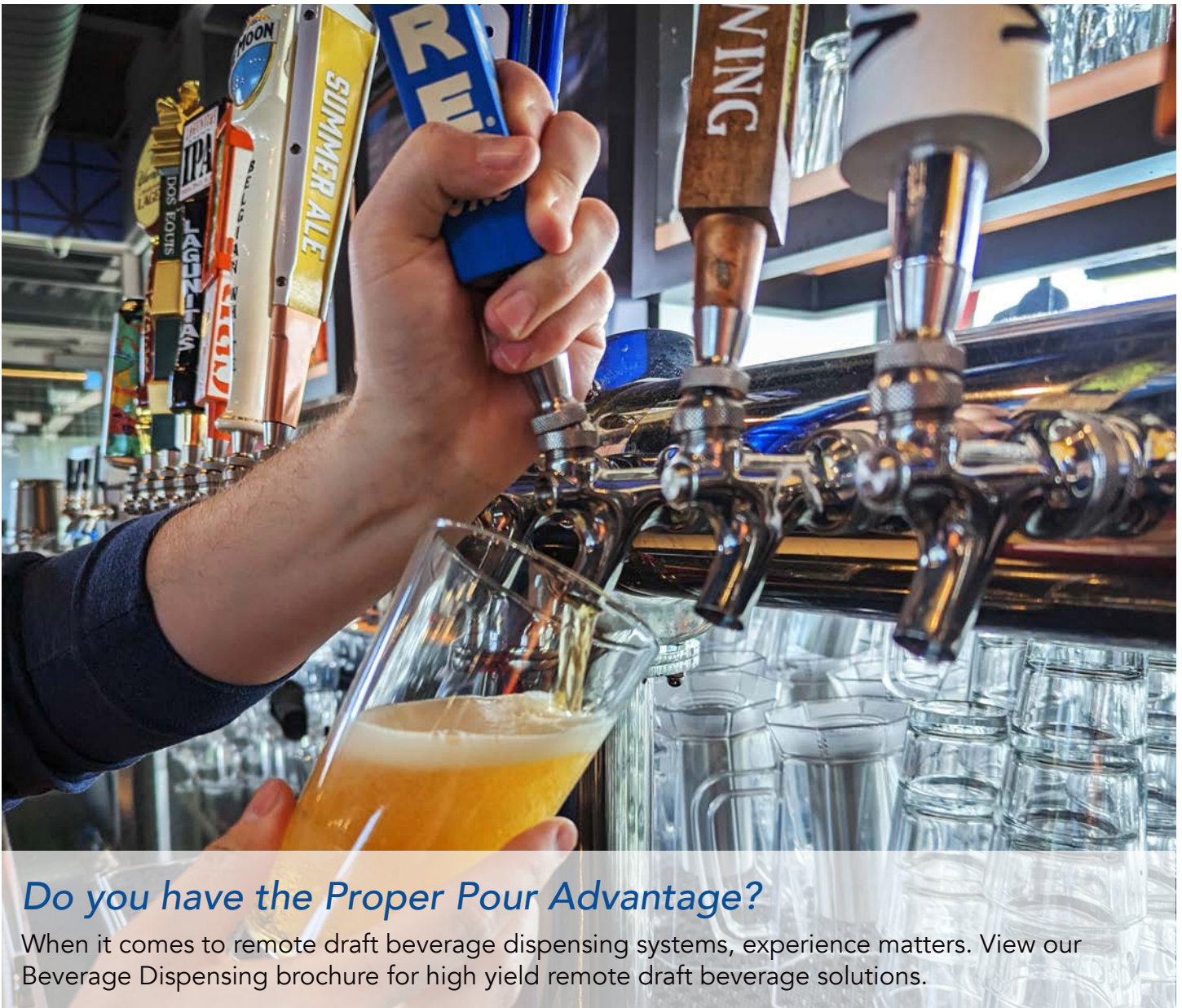
Dry Storage Cabinets

Bar- and low-profile dry storage cabinets available with one, two, three, or four doors.

Glastender®

Expect More. More Flexibility. More Features.

A full list of bar refrigeration products, spec sheets, manuals, and pricing can be accessed on our website at glastender.com or by scanning this code.



Do you have the Proper Pour Advantage?

When it comes to remote draft beverage dispensing systems, experience matters. View our Beverage Dispensing brochure for high yield remote draft beverage solutions.

marketing@glastender.com | 800.748.0423 | glastender.com

Glastender®

WOOD-CLAD REFRIGERATION



Features

Wood elements give the back bar a captivating and timeless look, achievable with the panel-ready configuration available on all of our reach-in refrigeration models.

Endless Possibilities

Templates are provided so customers can easily coordinate with a millworker to create any aesthetic desired.



Door Options

Doors are available solid, or with glass to increase product visibility.

Drawers

Any door section on standard-depth, bar-profile models or space-maximizing, low-profile models can be converted to two drawers.

Pull-Out Wine Shelves

Door sections can be configured with horizontal and/or vertical full-extension pull-out wine shelves.

Simple Installation

Our equipment arrives on-site ready to accept customer-supplied 3/4" wood panels, and installation is completed in a few simple steps.



Scan this code for more information.