

# CLENAWARE

SYSTEMS

ware excellence is standard



**Manufactured in The UK**

# The Clenaware Experience

Delivering Perfect Results Every Time



## TREAT IT

1

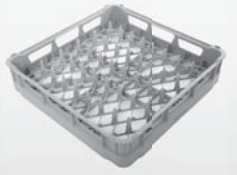
- ✓ Automatic Water Softeners
- ✓ Calcium Treatment Units
- ✓ Detergent
- ✓ Rinseaid
- ✓ Tea & Coffee Stain Removers
- ✓ Descaler



## PREPARE IT

2

- ✓ Cutlery Rack
- ✓ Dish Rack
- ✓ Open Rack



## WASH IT

3

- ✓ Fresh Water Wash
- ✓ 2, 3 or 4 Minute Cycle
- ✓ Thermal Disinfection Rinse Cycle (TD50)
- ✓ WRAS Approved
- ✓ Fully Integrated Design



## STORE IT

4

- ✓ 3 Tier Static Rack Units
- ✓ 3 Tier Mobile Rack Units
- ✓ 5 Tier Static Rack Units
- ✓ 5 Tier Mobile Rack Units
- ✓ Catch Trays



## USE IT

5

- ✓ Tableware
- ✓ Looks Better
- ✓ Happy Customers



### Help and Advice

To present a perfect looking meal or beverage, you need perfectly clean tableware. The condition of the tableware at the point of presenting it to a customer is an essential element in customer satisfaction. Why compromise customer satisfaction?

At Clenaware we are passionate about our brand and our products. We believe that everything we do, from design and manufacturing, through to the after sales we provide, should achieve that goal of "Delivering Perfect Results" every time. At Clenaware, "Excellence comes as standard".

# Treat It

## Water Treatment & Chemicals

### Water Treatment

Over time, fat deposits (fog), limescale and other minerals can begin to build-up on the surfaces of your tableware. Not only is this unsightly, but its presence means that your crockery and cutlery is not perfectly clean for presentation to your customers. Using the right cleaning chemicals and water treatments are not only beneficial to preventing this build-up, but also necessary for delivering perfect cleaning results and for prolonging the life of your tableware.

Clenaware can supply, install and maintain:



Automatic Water Softeners

Calcium Treatment Units  
Automatic Water Softeners  
Salt



Salt  
Sizes: 10Kg or 25Kg bags

### Clenaware Systems Limited

44 Huxley Close, Park Farm Industrial Estate, Wellingborough, Northamptonshire NN8 6AB  
Tel: 01933 666244 • Fax: 01933 665584 • Email: info@clenaware.co.uk • www.clenaware.co.uk

### Chemicals

High quality chemicals are essential for cleaning and drying tableware, they are also essential for looking after your dishwasher. Chemicals play an important part in the overall processes of achieving perfect results.



Dishwasher Detergent - Standard



Dishwasher Detergent - Hard Water



Dishwasher Rinseaid



Descaler

**Did you know?** Good quality chemicals are formulated to cope with high levels of tannins, proteins and water hardness. Specialist pre-treatments such as tannin remover can help to remove stubborn grease and oil from your tableware, before they go into the dishwasher.

# Prepare It

## Baskets

With many different styles and sizes of tableware in constant use, ensuring you choose the right dishwasher rack to wash them in is more important than ever. Dishwasher racks come in a range of styles which have been designed with a specific use in mind.

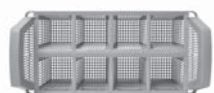
Clenaware can supply:



Dish Rack  
Size: 500mm<sup>2</sup>



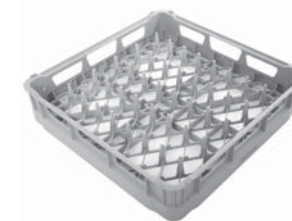
Open Rack  
Size: 500mm<sup>2</sup>



Cutlery Rack  
Size: 220mm

### Dish Rack

The dish rack is of a thermo-plastic design, with special support prongs to hold plates and saucers upright, ensuring optimum cleaning whilst in the dishwasher. As the dish rack is compartmented, it is useful for washing a variety of dish sizes in one cycle.



### Open Rack

The open rack is of a thermo-plastic design and has a flat, open base. The open area allows for extra utensils and cutlery, or larger items such as whisks or large kitchen knives, that may otherwise not fit into a cutlery rack.



### Cutlery Rack

The cutlery rack is a compartmented basket and has a thermo-plastic design. The rack has 4 generous sized compartments for your knives, forks, spoons and other utensils. The cutlery rack sits inside any dishwasher rack, which means you can wash your cutlery with other items such as plates and cups.



#### Clenaware Systems Limited

44 Huxley Close, Park Farm Industrial Estate, Wellingborough, Northamptonshire NN8 6AB  
Tel: 01933 666244 • Fax: 01933 665584 • Email: info@clenaware.co.uk • www.clenaware.co.uk

**Did you know?** The Clenaware Dishwasher racks are suitable not only for your standard tableware, but can also be used to hold specialist items such as chopsticks.

# Wash It

## Dishwashers - Jubilee

For over 50 years, Clenaware has been providing customers with the ultimate in ware washing equipment. The Jubilee 50 is the newest addition to the Clenaware ware washing family.

### Fresh Water Wash

The Jubilee 50 Dishwasher is a "Fresh Water Wash" machine which means the last wash is exactly the same as the first. The "Fresh Water Wash" system replaces the wash water every time to ensure you obtain the same consistent cleaning result.

### Three Wash Cycles

The Jubilee 50 Dishwasher offers 3 wash cycles for the best washing results. A light, medium and heavy soil cycle can be chosen to ensure that the right wash is used each time. The simple soft touch controls make the machine easy to use. The Jubilee 50 also has a special 'close down' cycle which is used at the end of the washing day, saving you time as no manual shutdown is required.

### Flexible Electrical & Water Installation

The Jubilee 50 Dishwasher offers a flexible connection which means it can be run as a single phase 30 Amp, 13 Amp or three phase connection. The Jubilee 50 can also run from a Hot or Cold water supply (Gravity or Mains).

#### Clenaware Systems Limited

44 Huxley Close, Park Farm Industrial Estate, Wellingborough, Northamptonshire NN8 6AB  
Tel: 01933 666244 • Fax: 01933 665584 • Email: info@clenaware.co.uk • www.clenaware.co.uk



Jubilee 50

### Integrated Design

The Jubilee 50 Dishwasher is designed to be a fully integrated machine with everything you need built into it. The Jubilee 50 includes a rinse booster pump, a waste pump and chemical injection and sensing. It also includes a built-in self diagnostics system and is WRAS approved.



Machine Type:	Cabinet
Model:	Jubilee 50
Electrical:	Single Phase 30 Amp / 13 Amp / Three Phase
Water:	Hot or Cold (Gravity or Mains)
Machine Finish:	Brushed Stainless Steel - 304
Double Skinned:	Yes
Rack Size:	500mm <sup>2</sup> / 500mm <sup>2</sup>
Racks Per Hour:	Up to 30
Rack Capacity:	16 Dishes - 30 Cups
Fresh Water Wash:	Yes
Standard Cycle Time:	2, 3 & 4 Minutes

Closedown Cycle:	Yes
Break Tank:	Yes
WRAS Approved:	Yes
Rinse Booster Pump:	Yes
Pumped Waste:	Yes
Chemical Injection:	Peristaltic
Chemical Sensing/Priming:	Yes
Soft Touch Controls:	Yes
Self Diagnostics:	Yes
Manufactured to ISO 9001 : 2008	Yes
CE Marked:	Yes

**Did you know?** Clenaware Systems has been designing and manufacturing ware washing equipment for over 50 years and we are a UK company that only designs and builds its products in the UK.

# Wash It

## Dishwashers - TD50

Many types of bacterial spores are not simply killed by normal disinfection alone. Thermal Disinfection achieves a high level of disinfection in a shorter space of time, and is also a safer and more effective method of disinfection.

### Designed for Healthcare

The TD50 Thermal Disinfection Dishwasher has been designed and built for the healthcare sector. The TD50 is a Thermal Disinfection machine that provides the most hygienic wash to all crockery and utensils. Thermal disinfection works by achieving a moist heat which is set at a specific temperature for a set amount of time. Viruses and bacteria are very sensitive to heat and will die if exposed to high temperatures.

### Fresh Water Wash

The TD50 Thermal Dishwasher is a "Fresh Water Wash" machine which means the last wash is exactly the same as the first. The "Fresh Water Wash" system replaces the wash water every time to ensure you obtain the same consistent cleaning result. The specially timed thermal rinse of 2 minutes is set to 82°C and is followed by a cooling rinse to make the removal of crockery after the cycle, safe and easy.

### Remote Monitoring

The TD50 Thermal Dishwasher can be supplied with the latest innovation to Clenaware machines, the Clenaware Monitoring System (CMS). The CMS allows for full monitoring and management of your machine and reduces the on-going running costs. The CMS provides pro-active support to your Clenaware machine.

#### Clenaware Systems Limited

44 Huxley Close, Park Farm Industrial Estate, Wellingborough, Northamptonshire NN8 6AB  
 Tel: 01933 666244 • Fax: 01933 665584 • Email: info@clenaware.co.uk • www.clenaware.co.uk



TD 50

### Integrated Design

The TD50 Dishwasher is designed to be a fully integrated machine. The TD50 has a cycle-activated door lock, which cannot be opened whilst the machine is performing a cycle- guaranteeing that bacteria cannot be re-introduced. The TD50 includes a rinse booster pump, a waste pump and chemical injection and sensing, it also includes a built-in self diagnostics system and is WRAS approved.



Machine Type:	Cabinet
Model:	TD50 Thermal Dishwasher
Electrical:	Single Phase 30 Amp / 13 Amp / Three Phase
Water:	Hot or Cold (Gravity or Mains)
Machine Finish:	Brushed Stainless Steel
Double Skinned:	Yes
Rack Size:	500mm <sup>2</sup> / 500mm <sup>2</sup>
Racks Per Hour:	Up to 7
Rack Capacity:	16 Dishes - 30 Cups
Fresh Water Wash:	Yes
Standard Cycle Time:	8 - 10* Minutes

Closedown Cycle:	Yes
Break Tank:	Yes
WRAS Approved:	Yes
Rinse Booster Pump:	Yes
Pumped Waste:	Yes
Chemical Injection:	Peristaltic
Chemical Sensing / Priming:	Yes
Soft Touch Controls:	Yes
Self Diagnostics:	Yes
Manufactured to ISO 9001 : 2008	Yes
CE Marked:	Yes

\* Cycle time dependant on water supply.

**Did you know?** Clenaware Systems has been designing and manufacturing ware washing equipment for over 50 years and we are a UK company that only designs and builds its products in the UK.

# Store It

## Rack Units

Storing crockery and cutlery correctly, will prevent the re-introduction of contaminants or dampness to your freshly washed wares.

### Static and Mobile Units

Rack units are an ideal addition to the ware washing process. Wares are kept in the unit safely and securely, cross-contamination is prevented and good ventilation is ensured during storage.

Clenaware can supply:



3 Tier Static  
Rack Unit  
Size: 50



3 Tier Mobile  
Rack Unit  
Size: 50



5 Tier Static  
Rack Unit  
Size: 50



5 Tier Mobile  
Rack Unit  
Size: 50



Static Stand  
Size: 50



Mobile Stand  
Size: 50

### Storage Solutions

Clenaware rack units are available as 3 or 5 tier high units and as static or mobile solutions. All units are made from solid stainless steel making them durable and robust. All units are supplied with catch trays as standard.

### Static Units

Static units slide snugly and easily into spare space in the kitchen or washing area. Static units are available as 3 or 5 tier high units.

### Mobile Units

Mobile units are designed for easy movement around the kitchen or washing area. As standard they come with 2 braked castors for safety once the unit is in position for storage. They are available as 3 or 5 tier high units.

### Durable

The units are made of solid Stainless Steel and so not only look 'swish', but are able to handle the knocks and bumps of a busy kitchen. All units are supplied with high quality catch trays as standard.

#### Clenaware Systems Limited

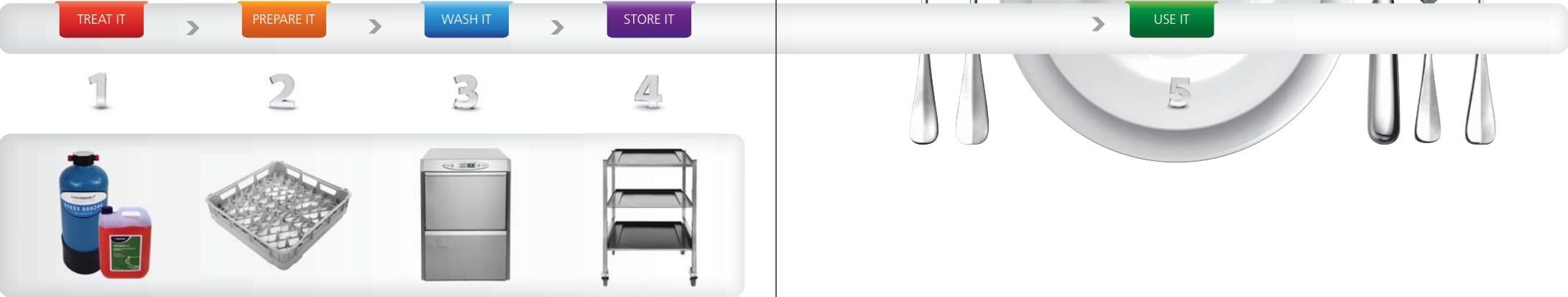
44 Huxley Close, Park Farm Industrial Estate, Wellingborough, Northamptonshire NN8 6AB  
Tel: 01933 666244 • Fax: 01933 665584 • Email: info@clenaware.co.uk • www.clenaware.co.uk

**Did you know?** By placing clean plates and cups onto a shelf or in a cupboard, the risk of cross-contamination and dampness is high, resulting in 'musty' smelling and dull looking tableware.

# Use It With a smile

Being presented with dirty or dull looking crockery and cutlery can stay in a customer's memory as a bad experience of your business forever. Using the Clenaware process to treat, prepare, wash and store your tableware will ensure that each and every one of your customers is presented with clean and bright looking crockery and cutlery. Why compromise customer satisfaction?

The Clenaware Solution:



**Clenaware Systems Limited**

44 Huxley Close, Park Farm Industrial Estate, Wellingborough, Northamptonshire NN8 6AB  
 Tel: 01933 666244 • Fax: 01933 665584 • Email: info@clenaware.co.uk • www.clenaware.co.uk

**Did you know?** The make or break of any catering operation can be the Dishwashing department. If tableware can't be turned around quick enough; the whole operation can grind to a halt and cause customers to complain.

## Service It, Support It

ClenaCare

ClenaCare is a support service offered by Clenaware Systems for all our products to ensure that the "Clenaware Experience" is the best that it can be.

### Clenaware Monitoring System (CMS)

The Clenaware Monitoring System allows for the complete management of the Clenaware machine and records and reports through an easy to use online interface that users can access on a real-time, 24/7 basis from any internet enabled PC. The CMS also allows for the management of multiple machines across single locations or estates.



- Access to real-time machine data through any standard Internet Browser
- Access to a wide range of machine usage reports and audit trails
- Monitoring of items such as the consumption of power, water and consumable parts
- Identifying service and maintenance issues before they arise
- Reducing engineer call outs and costs whilst increasing the first time fix rate



The Clenaware Monitoring System offers many key benefits, however, the biggest benefit is that support and service can be offered in a more pro-active way as it takes away many elements of the re-active support that tends to happen with commercial equipment.

#### Clenaware Systems Limited

44 Huxley Close, Park Farm Industrial Estate, Wellingborough, Northamptonshire NN8 6AB  
Tel: 01933 666244 • Fax: 01933 665584 • Email: info@clenaware.co.uk • www.clenaware.co.uk

### Machine Installation

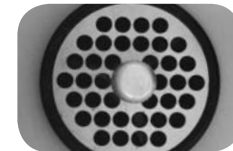
We offer a complete Installation, Removal and Disposal service for your new or replacement Clenaware machine. The Installation, Removal and Disposal service covers all machines in the Clenaware range and is carried out by trained Clenaware engineers.

### Machine Maintenance Service

We offer a complete Machine Maintenance Service package which is designed to provide maintenance and service to your Clenaware machine, ensuring that it continues to provide first class results. Like all equipment, a regular service provides long term benefits for the machine and its life span. All Machine Maintenance Services are carried out by trained Clenaware engineers and include any service parts that need to be replaced.

### Machine Assessment

A Clenaware machine assessment service can be offered as an alternative to fixing a problem or breakdown there and then. The machine assessment service has been introduced to help customers gain a better understanding of the condition of their machine. The machine assessment service involves an engineer visit on site and to spend approximately 1 hour assessing the whole machine. The engineer will look at all the key aspects and functionality of the machine. Following the assessment, customers receive a full report on the machines condition alongside any recommended actions to bring the machine up to a good working standard. The advantages of this service is that it gives you a full report on the whole machine so that you can make an informed decision on what actions you wish to take.



### Machine Refurbishment

For anyone that has a Clenaware machine we offer a Machine Refurbishment Service. A machine refurbishment can be requested for many reasons; perhaps the machine is unserviceable and hasn't been in use for a while, or maybe a refit means the opportunity to refurbish existing machines. For whatever reason, Clenaware can refurbish machines to the same high standard of any new machine it manufactures.

**Did you know?** The Clenaware Monitoring System allows us to monitor and manage your machine on your behalf. We can solve problems and issues much faster, often in many cases without the need for an engineer to visit.

# Product List

Deal with us direct

## Water Treatment

Automatic Water Softener	Litres - 10 / 14	Cold
Automatic Water Softener	Litres - 10 / 14	Hot
Calcium Treatment Unit	Litres - 5 / 10 / 18 / 23	Cold
Calcium Treatment Exchange Units	Litres - 5 / 10 / 18 / 23	Cold
Salt	Kilos - 10kg / 25kg	



## Chemicals

Dishwasher Detergent - Standard	2 x 5 Litre
Dishwasher Detergent - Hard Water	2 x 5 Litre
Dishwasher Rinseaid	2 x 5 Litre
Descaler Tub	2.5Kg
Renovate Tub	2.5Kg
Renovate Sachets	22 x 100 grams
Tea & Coffee Stain Remover Tub	5Kg



## Dishwashers

Jubilee 50 - 30Amp	500mm x 500mm Basket	W605 x H840 x D650
Jubilee 50 - 3 Phase	500mm x 500mm Basket	W605 x H840 x D650
TD50 - 30Amp	500mm x 500mm Basket	W605 x H840 x D650
TD50 - 3 Phase	500mm x 500mm Basket	W605 x H840 x D650



## Machine Stands

Machine Stand - Adjustable Feet - 50 Size	W580 x H290 x D672
Machine Stand - Mobile - 50 Size	W580 x H340 x D672



## Racks

Cutlery Rack	W220 x H140 x D220
Dish Rack	W500 x H110 x D500
Open Rack	W500 x H110 x D500



## Rack Units

3 Tier Unit - Static - 50 Size	500mm <sup>2</sup> Basket Size	W570 x H750 x D500
3 Tier Unit - Mobile - 50 Size	500mm <sup>2</sup> Basket Size	W570 x H800 x D500
5 Tier Unit - Static - 50 Size	500mm <sup>2</sup> Basket Size	W570 x H1400 x D500
5 Tier Unit - Mobile - 50 Size	500mm <sup>2</sup> Basket Size	W570 x H1450 x D500



## Machine Cleaning Items

Cabinet Brush
Cleaning Brush Spraybar
Wash and Rinse Jet Cleaning Tool
Stainless Steel Cleaner
Bactericidal Cleaner
Machine Cleaning Kit



## Service and Support

Machine Installation
Machine Maintenance Service
Machine Assessment
Machine Refurbishment
Clenaware Monitoring System (CMS)
Machine Service and Warranty Plans



## Other Products In Our Range

Single Sink Units
Double Sink Units
Glass Washers
Airack Glass Dryers
Bespoke Machine Designs
Café Rack



### Clenaware Systems Limited

44 Huxley Close, Park Farm Industrial Estate, Wellingborough, Northamptonshire NN8 6AB  
Tel: 01933 666244 • Fax: 01933 665584 • Email: info@clenaware.co.uk • www.clenaware.co.uk

**Did you know?** Dealing with us direct will save you time and money.  
Call us on 01933 666244 or visit our website - www.clenaware.co.uk.

**Address**

Clenaware Systems Limited  
44 Huxley Close  
Park Farm Industrial Estate  
Wellingborough  
Northamptonshire  
NN8 6AB

**Contact**

**Tel:** 01933 666244  
**Fax:** 01933 665584  
**Email:** [info@clenaware.co.uk](mailto:info@clenaware.co.uk)





# Product Information

Jubilee 50



## Product Overview & Key Features

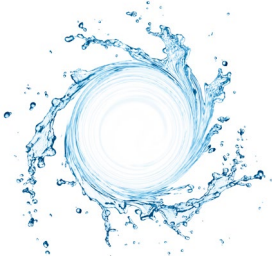
For over 50 years, Clenaware has been providing customers with the ultimate in warewashing equipment, and the Jubilee 50 is the newest addition to the Clenaware warewashing family.

The Jubilee 50 is an under-counter front loading machine, so there is no complicated rack or heavy hood system to manoeuvre, making the Jubilee 50 ideal for use in Bistros, Cafes and Restaurants.

Like all of the other warewashers available in the Clenaware range, the Jubilee 50 is a 'Fresh Water Wash' machine and is WRAS approved.

### Three Wash Cycles

The Jubilee 50 Dishwasher offers three wash cycles for the best washing results. A Light, Medium and Heavy Soiled Cycle can be chosen to ensure that the right wash is used each time. No matter which cycle is selected, every cycle uses fresh water for its wash; this means the same consistent cleaning results are delivered every time.

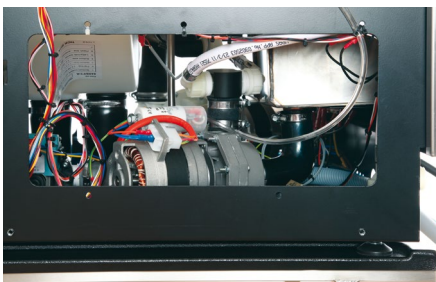
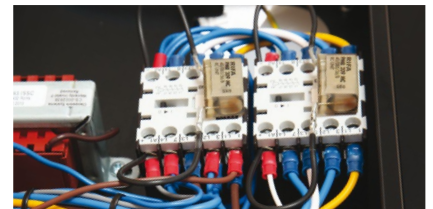


### Fresh Water Wash

Unlike other machines that reuse the wash water, the Jubilee Dishwasher is a "Fresh Water Wash" machine which always ensures the last wash is the same as the first. The "Fresh Water Wash" system replaces the wash water after every wash, and what's more, the rinse water is always fresh to ensure that you obtain the same consistent "Perfect" result every time.

### Flexible Electrical & Water Installation

The Jubilee 50 Dishwasher offers a flexible connection meaning it can run as a 30 Amp or 3 phase connection. The Jubilee 50 Dishwasher also offers flexible water connection, in that it can be run from a Hot or Cold water supply (Gravity or Mains).



### Intergrated Design

The Jubilee 50 Dishwasher is a fully integrated machine, which comes fitted as standard with a rinse pump; wash pump and waste pump system. With other manufacturers, these are optional extras which can cost you hundreds of pounds on top of the cost of a machine. With its self-diagnostic system, the Jubilee 50 will let you know whenever there's a problem with its day-to-day running and diagnoses issues early, to help you avoid any unnecessary call outs for breakdown and repair.



## Technical Specifications



	Jubilee 50 30 Amp	Jubilee 50 3 Phase
Machine Type:	Cabinet	Cabinet
Dimensions (mm):	W605 x H840 x D650	W605 x H840 x D650
Electrical:	Single Phase 30 Amp	Three Phase
Water:	Hot or Cold (Gravity or Mains)	Hot or Cold (Gravity or Mains)
Machine Finish:	Brushed Stainless Steel - 304	Brushed Stainless Steel - 304
Double Skinned:	Yes	Yes
Basket / Rack Size:	500mm sq	500mm sq
Basket / Rack Per Hour:	Up to 30	Up to 30
Basket / Rack Capacity:	16 Dishes - 30 Cups	16 Dishes - 30 Cups
Fresh Water Wash:	Yes	Yes
Standard Cycle Time:	2, 3 & 4* Minutes	2, 3 & 4* Minutes
Renovate Cycle:	No	No

\*Cycle time is dependant on water supply

Technical Specifications continued on next page.



Technical Specifications  
Continued



	Jubilee 50 30 Amp	Jubilee 50 3 Phase
Polycarbonate Cycle:	No	No
Closedown Cycle:	Yes	Yes
Break Tank:	Yes	Yes
WRAS Approved:	Yes	Yes
Water per Cycle (litres):	6.5	6.5
Rinse Booster Pump:	Yes	Yes
Pumped Waste:	Yes	Yes
Chemical Injection:	Peristaltic (Adjustable)	Peristaltic (Adjustable)
Chemical Sensing / Priming:	Yes	Yes
Soft Touch Controls:	Yes	Yes
Self Diagnostics:	Yes	Yes
Manufactured to ISO 9001 : 2008:	Yes	Yes



## Installation Requirements

### Siting

Positioning should be on a sound level surface with adequate clearance for servicing.

### Electrical

30 Amp Machine: Supplied for a single phase 230-240v 50Hz operation, fitted with a 4mm<sup>2</sup> 3-core H07-RNF Mains cable. Fused @ 25 Amps.

13 Amp Machine (de-rated): Suitable for single phase 230-240v 50Hz operation, fitted with a 1.5mm<sup>2</sup> 3-core H07-RNF mains cable. Fuse @ 13 Amps.

3-phase Machine: Supplied for three phase 400-415v (3Ph + N) 50Hz operation, fitted with a 2.5mm<sup>2</sup> five core H07-RNF mains cable. Fuse @ 15 Amps per phase.

The isolating switch must be positioned within one metre of the machine and be accessible.

### Water

A hot or cold single water supply is required, although a hot supply is recommended.

Hot water must not exceed 60°C and be 0.5 – 1.5 Bar @ 5lt/min

Or

Cold water must be a minimum of 5°C and be 0.5 – 10 Bar @ 5lt/min

The water supply must terminate with an easily accessible ¾" BSP Bib Tap within one metre of the machine.

### Waste

The machine has a pumped waste system which requires a trapped open-vent up-stand, a minimum of 450mm from the base of the machine. If the machine is on a stand then the up-stand will need to be higher. The up-stand should be 1 ½" in diameter, and the outlet hose is inserted no more than 100mm to avoid siphoning.

### Chemicals

Good quality chemicals should be used.

Chemicals are injected from external 5lt Detergent and Rinse-aid bottles via the chemical suction tubes.

### Water Treatment

For hard water supplies, the use of an automatic water softener is strongly recommended.

**Failure to comply with the installation requirements, cleaning procedures, or using the machine for purposes other than designed for, may invalidate the warranty.**

# CLENAWARE

S Y S T E M S

ware excellence is standard



## Clenaware Systems Ltd

44 Huxley Close, Park Farm Industrial Estate, Wellingborough. Northants. NN8 6AB

**Telephone:** 01933 666244 **Fax:** 01933 665584

**Email:** [info@clenaware.co.uk](mailto:info@clenaware.co.uk) **Web:** [www.clenaware.co.uk](http://www.clenaware.co.uk)

**MADE IN BRITAIN** 

CLENAWARE 

S Y S T E M S

ware excellence is standard



# Product Information

## Regent 50

MADE IN BRITAIN 



## Product Overview & Key Features

New to the Clenaware dishwashing family is the Regent range, a collection of robust, quality machines constructed from stainless steel and built to keep up with your busy kitchen.

The Regent 50 is an under-counter cabinet machine comprising of two models, a partial double-skinned and a double skinned version, both of which are perfect for pubs, bistros, cafes and restaurants.

All of the machines in the Regent range are fully WRAS approved with a type A air gap and high corrosion resistance AISI 316 stainless steel boiler. All Regent machines benefit from the unique Premium Rinse System.

### WRAS Approved with PRS

The Regent 50 Dishwasher is WRAS approved with a 'Type A' air gap which completely prevents any dirty water from going back into the mains water supply. Being WRAS approved means this dishwasher has been tested under pressure and has passed all checks and is in full compliance with regulations. This dishwasher also utilises the PRS (Premium Rinse System). The PRS oversees every detail of the rinse cycle given the combination of the break tank, the atmospheric boiler and the rinse pump. By using PRS, the dishwasher doesn't need to rely on the network's water pressure; it can function perfectly well with just 1 bar!



### Four Wash Cycles

Controlled by an intelligent Electronic Management System, the Regent 50 Dishwasher offers four wash cycles for the best washing results. 90 - 120 - 180 - 540 (sec) cycles can be chosen to ensure that the right wash is used each time. No matter which cycle is selected, you can rest assured you are getting the same constant cleaning results with the PRS (Premium Rinse System).

### Professional Quality

Constructed entirely from high-quality stainless steel the Regent 50 Dishwasher is suitable for use in all professional kitchens from restaurants and hotels, to pubs and clubs and includes a range of features and functions, allowing for optimum efficiency and high standards of cleanliness. Trays, pizza plates and large crockery can be easily washed thanks to a usable wash height of 35cm. To help keep the machine clean and up to standard, it utilises a self-clean system which takes place upon machine closedown.



### Integrated Design

The Regent 50 Dishwasher is a fully integrated machine which comes fitted as standard with a rinse booster pump, wash pump, double water filtration, PRS system and electronic management system. Some of these are optional extras on other dishwashers and can cost you hundreds of pounds on top of the cost of the machine.



## Technical Specifications



	Regent 50 Dishwasher EF 50E PRS	Regent 50 Dishwasher ES 50E PRS
Machine Type:	Under Counter Dishwasher	Under Counter Dishwasher
Dimensions (mm):	W572 x D630 x H814	W600 x D630 x H814
Skin:	Partial Double Skin	Double Skin
Total Weight:	62 Kg	68 Kg
Basket Dimensions (mm):	500 x 500	500 x 500
Number Of Baskets Per Hour:	40 - 30 - 20 - 7	40 - 30 - 20 - 7
Cycle Time (sec):	90 - 120 - 180 - 540	90 - 120 - 180 - 540
Maximum Item Height (mm):	350	350
Accessories Included:	1 x Dish Rack, 1 x Glass Rack 2 x Cutlery Sorters	1 x Dish Rack, 1 x Glass Rack 2 x Cutlery Sorters
WRAS Approved:	Yes	Yes
Air Gap:	Yes	Yes
Rinse Booster Pump:	Yes	Yes

Technical Specifications continued on next page.



Technical Specifications  
Continued



	Regent 50 Dishwasher EF 50E PRS	Regent 50 Dishwasher ES 50E PRS
Premium Rinse System:	Yes	Yes
Water Pressure (min-max):	1 - 5 Bar	1 - 5 Bar
Wash Tank Capacity:	20 Litres	20 Litres
Electronic Management:	Yes	Yes
Voltage:	230V - 50Hz (32 Amp)	230V - 50Hz (32 Amp)
Total Power:	6.55 kW	6.55 kW
Wash Arms:	Stainless Steel	Stainless Steel
Rinse Arms:	Stainless Steel	Stainless Steel



## Installation Requirements

### Siting

Positioning should be on a sound level surface with adequate clearance for servicing. Use the screws of the feet and a spirit level to ensure that the machine is levelled

### Electrical

The voltage of main power supply must be compatible with the rated voltage. The machine must be connected to a suitable earth (ground) system.

32 Amp machine: Supplied for a single phase 230V - 50Hz operation, fitted with a 3-core 4mm<sup>2</sup> mains rubberised cable. Fused @ 25 Amps.

The isolating switch must be positioned within one metre of the machine and be accessible.

### Water

The temperature of the water-supply must be between 10°C to 50°C

The water pressure must be between 0.1MPa (1bar), and, 0.5MPa (5 bar)

The water supply must terminate with an easily accessible ¾" BSP Bib Tap within one metre of the machine.

### Chemicals

Good quality chemicals should be used.

Chemicals are injected from external 5lt Detergent and Rinse-aid bottles via the chemical suction tubes.

### Water Treatment

For hard water supplies, the use of an automatic water softener is strongly recommended.

**Failure to comply with the installation requirements, cleaning procedures, or using the machine for purposes other than designed for, may invalidate the warranty.**

# CLENAWARE

S Y S T E M S

---

ware excellence is standard



## Clenaware Systems Ltd

44 Huxley Close, Park Farm Industrial Estate, Wellingborough. Northants. NN8 6AB

**Telephone:** 01933 666244 **Fax:** 01933 665584

**Email:** [info@clenaware.co.uk](mailto:info@clenaware.co.uk) **Web:** [www.clenaware.co.uk](http://www.clenaware.co.uk)

**MADE IN BRITAIN** 

CLENAWARE



S Y S T E M S

ware excellence is standard



# Product Information

## Regent Hood

MADE IN BRITAIN 



## Product Overview & Key Features

New to the Clenaware dishwashing family is the Regent range, a collection of robust, quality machines constructed from stainless steel and built to keep up with your busy kitchen.

The Regent Hood range comprises of entry-level hood machines all the way up to high-end double-skinned machines with a highly engineered Energy Recovery System. Our range of Regent Hood Dishwashers are perfect for commercial kitchens, large restaurants and hotels and include a variety of features and functions, allowing for optimum efficiency and high standards of cleanliness.

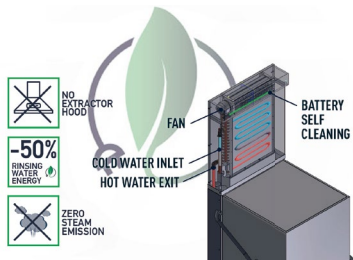
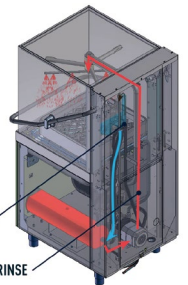
All of the machines in the Regent range are fully WRAS approved with a type A air gap and high corrosion resistance AISI 316 stainless steel boiler. All Regent machines benefit from the unique Premium Rinse System.

### WRAS Approved with PRS

Regent Hood Dishwashers are WRAS approved with a 'Type A' air gap which completely prevents any dirty water from going back into the mains water supply. Being WRAS approved means this dishwasher has been tested under pressure and has passed all checks and is in full compliance with regulations. This dishwasher also utilises the PRS (Premium Rinse System). The PRS oversees every detail of the rinse cycle given the combination of the break tank, the atmospheric boiler and the rinse pump. By using PRS, the dishwasher doesn't need to rely on the network's water pressure; it can function perfectly well with just 1 bar!

### PRS PREMIUM RINSE SYSTEM

MAIN WATER SUPPLY  
PRS CONSTANT RINSE



### Energy Recovery System

Unique to our hood range of dishwashers is the carefully engineered ERS (Energy Recovery System) which uses the power of steam to reduce your energy expenditure saving you money! The ERS takes the steam from your dishwasher and uses it to pre-heat the cold water that is entering the dishwasher at no extra cost. By utilising the steam created by the dishwasher, you are able to save up to 50% of your energy usage during the step of heating water.

### Premium Quality

Sturdy, versatile and elegant, Clenaware Regent Hood Dishwashers offer the best in terms of washing performance and long-lasting quality. Constructed from stainless steel and designed to keep up with your kitchen. A benefit of the Regent Hood Dishwasher compared to an under-counter dishwasher is that it can be integrated into your kitchen with tabling allowing you to create a "conveyor system" for more efficient washing. Trays, pizza plates and large crockery can be easily washed thanks to a usable wash height of 42cm. The intuitive digital display accurately shows the machines wash temperature, reassuring you that the machine is up to temperature and thoroughly cleaning and sanitising during the cycle.



### Integrated Design

The Regent Hood Dishwasher is a fully integrated machine which comes fitted as standard with a rinse booster pump, wash pump, triple water filtration, Premium Rinse System, and electronic management system. Some of these are optional extras on other dishwashers and can cost you hundreds of pounds on top of the cost of the machine.



## Technical Specifications Single Skin Dishwasher



	Regent Hood Dishwasher SS - EH 850E PRS	Regent Hood Dishwasher SS - EH 1200E PRS	Regent Hood Dishwasher SS - EH 1500E PRS
Machine Type:	Hood Dishwasher	Hood Dishwasher	Hood Dishwasher
Dimensions (mm):	W657 x D793 x H1485 With Hood Up - H1942 Including Handle - W760	W657 x D793 x H1485 With Hood Up - H1942 Including Handle - W760	W657 x D793 x H1485 With Hood Up - H1942 Including Handle - W760
Skin:	Single Skin	Single Skin	Single Skin
Total Weight:	130 Kg	137 Kg	146 Kg
Basket Dimensions (mm):	500 x 500	500 x 500	500 x 500
Number Of Baskets Per Hour:	60 - 30 - 20 - 7	60 - 30 - 20 - 7	60 - 30 - 20 - 7
Cycle Time (sec):	60 - 120 - 180 - 540	60 - 120 - 180 - 540	60 - 120 - 180 - 540
Maximum Item Height (mm):	420	420	420
Accessories Included:	2 x Dish Rack, 1 x Glass Rack 2 x Cutlery Sorters	2 x Dish Rack, 1 x Glass Rack 2 x Cutlery Sorters	2 x Dish Rack, 1 x Glass Rack 2 x Cutlery Sorters
WRAS Approved:	Yes	Yes	Yes
Air Gap:	Yes	Yes	Yes
Rinse Booster Pump:	Yes	Yes	Yes

Technical Specifications continued on next page.



## Technical Specifications Single Skin Dishwasher



	Regent Hood Dishwasher SS - EH 850E PRS	Regent Hood Dishwasher SS - EH 1200E PRS	Regent Hood Dishwasher SS - EH 1500E PRS
Energy Recovery System:	No	No	No
Premium Rinse System:	Yes	Yes	Yes
Water Pressure:	1 - 5 Bar	1 - 5 Bar	1 - 5 Bar
Wash Tank Capacity:	30 Litres	30 Litres	40 Litres
Electronic Management:	Yes	Yes	Yes
Voltage:	230V - 50Hz (32 Amp)	230V - 50Hz (32 Amp)	400V - 3N - 50Hz (3 Phase)
Total Power:	6.75 kW	7 kW	10.3 kW
Wash Arms:	Stainless Steel	Stainless Steel	Stainless Steel
Rinse Arms:	Stainless Steel	Stainless Steel	Stainless Steel



## Technical Specifications Double Skin Dishwasher



	Regent Hood Dishwasher DS - EH 850E PRS	Regent Hood Dishwasher DS - EH 1200E PRS	Regent Hood Dishwasher DS - EH 1500E PRS
Machine Type:	Hood Dishwasher	Hood Dishwasher	Hood Dishwasher
Dimensions (mm):	W657 x D793 x H1485 With Hood Up - H1942 Including Handle - W760	W657 x D793 x H1485 With Hood Up - H1942 Including Handle - W760	W657 x D793 x H1485 With Hood Up - H1942 Including Handle - W760
Skin:	Hood Double Skin	Hood Double Skin	Hood Double Skin
Total Weight:	130 Kg	137 Kg	146 Kg
Basket Dimensions (mm):	500 x 500	500 x 500	500 x 500
Number Of Baskets Per Hour:	60 - 30 - 20 - 7	60 - 30 - 20 - 7	60 - 30 - 20 - 7
Cycle Time (sec):	60 - 120 - 180 - 540	60 - 120 - 180 - 540	60 - 120 - 180 - 540
Maximum Item Height (mm):	420	420	420
Accessories Included:	2 x Dish Rack, 1 x Glass Rack 2 x Cutlery Sorters	2 x Dish Rack, 1 x Glass Rack 2 x Cutlery Sorters	2 x Dish Rack, 1 x Glass Rack 2 x Cutlery Sorters
WRAS Approved:	Yes	Yes	Yes
Air Gap:	Yes	Yes	Yes
Rinse Booster Pump:	Yes	Yes	Yes

Technical Specifications continued on next page.



# Technical Specifications Double Skin Dishwasher



	Regent Hood Dishwasher DS - EH 850E PRS	Regent Hood Dishwasher DS - EH 1200E PRS	Regent Hood Dishwasher DS - EH 1500E PRS
Energy Recovery System:	No	No	No
Premium Rinse System:	Yes	Yes	Yes
Water Pressure:	1 - 5 Bar	1 - 5 Bar	1 - 5 Bar
Wash Tank Capacity:	30 Litres	30 Litres	40 Litres
Electronic Management:	Yes	Yes	Yes
Voltage:	230V - 50Hz (32 Amp)	230V - 50Hz (32 Amp)	400V - 3N - 50Hz (3 Phase)
Total Power:	6.75 kW	7 kW	10.3 kW
Wash Arms:	Stainless Steel	Stainless Steel	Stainless Steel
Rinse Arms:	Stainless Steel	Stainless Steel	Stainless Steel



## Technical Specifications ERS Dishwasher



	Regent Hood Energy Recovery Dishwasher - EH 850E ES	Regent Hood Energy Recovery Dishwasher - EH 1200E ES	Regent Hood Energy Recovery Dishwasher - EH 1500E ES
<b>Machine Type:</b>	Hood Dishwasher	Hood Dishwasher	Hood Dishwasher
<b>Dimensions (mm):</b>	W657 x D793 x H2258 Including Handle - W760	W657 x D793 x H2258 Including Handle - W760	W657 x D793 x H2258 Including Handle - W760
<b>Skin:</b>	Hood Double Skin	Hood Double Skin	Hood Double Skin
<b>Total Weight:</b>	160 Kg	167 Kg	176 Kg
<b>Basket Dimensions (mm):</b>	500 x 500	500 x 500	500 x 500
<b>Number Of Baskets Per Hour:</b>	60 - 30 - 20 - 7	60 - 30 - 20 - 7	60 - 30 - 20 - 7
<b>Cycle Time (sec):</b>	60 - 120 - 180 - 540	60 - 120 - 180 - 540	60 - 120 - 180 - 540
<b>Maximum Item Height (mm):</b>	420	420	420
<b>Accessories Included:</b>	2 x Dish Rack, 1 x Glass Rack 2 x Cutlery Sorters	2 x Dish Rack, 1 x Glass Rack 2 x Cutlery Sorters	2 x Dish Rack, 1 x Glass Rack 2 x Cutlery Sorters
<b>WRAS Approved:</b>	Yes	Yes	Yes
<b>Air Gap:</b>	Yes	Yes	Yes
<b>Rinse Booster Pump:</b>	Yes	Yes	Yes

Technical Specifications continued on next page.



# Technical Specifications ERS Dishwasher



	Regent Hood Energy Recovery Dishwasher - EH 850E ES	Regent Hood Energy Recovery Dishwasher - EH 1200E ES	Regent Hood Energy Recovery Dishwasher - EH 1500E ES
Energy Recovery System:	Yes	Yes	Yes
Premium Rinse System:	Yes	Yes	Yes
Water Pressure:	1 - 5 Bar	1 - 5 Bar	1 - 5 Bar
Wash Tank Capacity:	30 Litres	30 Litres	40 Litres
Electronic Management:	Yes	Yes	Yes
Voltage:	230V - 50Hz (32 Amp)	230V - 50Hz (32 Amp)	400V - 3N - 50Hz (3 Phase)
Total Power:	6.75 kW	7 kW	10.3 kW
Wash Arms:	Stainless Steel	Stainless Steel	Stainless Steel
Rinse Arms:	Stainless Steel	Stainless Steel	Stainless Steel



## Installation Requirements

### Siting

Positioning should be on a sound level surface with adequate clearance for servicing. Use the screws of the feet and a spirit level to ensure that the machine is levelled

### Electrical

The voltage of main power supply must be compatible with the rated voltage. The machine must be connected to a suitable earth (ground) system.

32 Amp machine: Supplied for a single phase 230V - 50Hz operation, fitted with a 3-core 4mm<sup>2</sup> mains rubberised cable. Fused @ 25 Amps.

3-phase machine: Supplied for three phase 400V (3Ph + N) - 50Hz operation, fitted with a 5-core 4mm<sup>2</sup> mains rubberised cable. Fused @ 15 Amps per phase.

The isolating switch must be positioned within one metre of the machine and be accessible.

### Water

The temperature of the water-supply must be between 10°C to 50°C

The water pressure must be between 0.1MPa (1bar), and, 0.5MPa (5 bar)

The water supply must terminate with an easily accessible ¾" BSP Bib Tap within one metre of the machine.

### Chemicals

Good quality chemicals should be used.

Chemicals are injected from external 5lt Detergent and Rinse-aid bottles via the chemical suction tubes.

### Water Treatment

For hard water supplies, the use of an automatic water softener is strongly recommended.

**Failure to comply with the installation requirements, cleaning procedures, or using the machine for purposes other than designed for, may invalidate the warranty.**

# CLENAWARE

S Y S T E M S

ware excellence is standard



## Clenaware Systems Ltd

44 Huxley Close, Park Farm Industrial Estate, Wellingborough. Northants. NN8 6AB

**Telephone:** 01933 666244 **Fax:** 01933 665584

**Email:** [info@clenaware.co.uk](mailto:info@clenaware.co.uk) **Web:** [www.clenaware.co.uk](http://www.clenaware.co.uk)

**MADE IN BRITAIN** 